



॥ Tamaso ma Jyotirgamaya ॥  
Shri Someshwar Shikshan Prasarak Mandal's

## Sharadchandra Pawar College of Engineering & Technology

Someshwarnagar, Tal. Baramati, Dist. Pune (Pin : 412 306 ) Maharashtra, India  
Approved by AICTE New Delhi, Recognised by Govt. of Maharashtra &  
Affiliated to Savitribai Phule Pune University, Pune, Id. No. PU/PN. Engg./445/2012  
Ph : (02112) 253185, Fax : (02112) 283185

Ref. No. : SPCE/ / /2020 - 2021

Date : 19/06/2021

### **Institutional strategies for mobilization of funds and the optimal utilization of resources**

Institute maintains & follows a well-planned process for the mobilization of funds and resource. The process involves various committees of the institute as well as the Department Heads and Accounts office. Institute has designed some specific rules for the fund usage and resource utilization.

- Mobilization of Funds, the student Tuition fee is the major source of income for the institute.
- The management/Sanstha/, Sanstha and Shri Someshwar Sahakari Sakhar Karkhana LTD, Someshwarnagar provides financial support and provides need-based loans to individual colleges.
- Various government and non-government agencies sponsor events like seminars and workshops.
- Alumni contribute to the institute by raising funds to purchase items like water coolers, wall clocks, etc.
- Sponsorships are sought from individuals and corporate for cultural events and fests.

### **Utilization of Funds**

- A finance committee has been constituted to monitor the optimum utilization of funds for various recurring and non-recurring expenses
- The purchase committee seeks quotations from vendors for the purchase of equipment, computers, books, etc.
- The quotations are scrutinized by the finance and purchase committee before a final decision is made based on parameters like pricing, quality, terms of service, etc.
- The Principal, finance and purchase committees along with the accounts department ensure that the expenditure lies within the allotted budget. The intervention of the management is sought in case the expenditure exceeds the budget.

### **Resource Mobilization Policy and Procedure**

- Before the financial year begins, Principal and Heads of Departments prepare the college budget.
- The institutional budget includes recurring expenses such as salary, electricity and internet charges, stationary & other maintenance costs.
- It includes planned expenses such as lab equipment purchases, furniture, and other

1 | Page

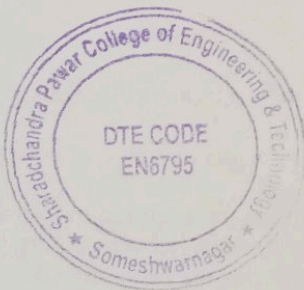


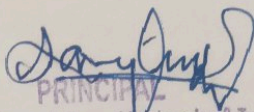
development Expenses.

- The budget is scrutinized and approved by the top management and Governing Council.
- Accounts department and Purchase department monitor whether expenses are exceeding budget provision.
- Statutory auditors are also appointed who certify the financial statements in every financial year.
- The grants received by the college are also audited by certified auditors.

#### Optimal utilization of resources

- The college aims at promoting research, development, consultancy and such other activities, involving the faculty at various levels.
- The faculty, who exhibit initiative and receive substantial grants for R&D works or for strengthening the infrastructure in the institute would be encouraged and will receive special commendation.
- Travel grants can be sanctioned to faculty to present research papers at or to attend National or International Conferences in India or abroad, depending on availability of funds.
- Effective utilization of infrastructure is ensured through the appointment of adequate and well-qualified lab technicians & system administrators.
- The optimal utilization is ensured through encouraging innovative teaching-learning practices.
- The available physical infrastructure is optimally utilized beyond regular college hours, to conduct remedial classes, co-curricular activities/extra-curricular activities, parent-teacher meetings.
- The college infrastructure is utilized as an examination centre for Government examinations/University Examinations.
- Library functions beyond the college hours for the benefit of students, faculty, and alumni.



  
PRINCIPAL  
Shri Chandra Pawar College of Engineering & Technology  
Someshwarnagar, Tal. Baramati, Dist. Pune (Pin : 412 306)





॥ Tamaso ma Jyotirgamaya ॥  
Shri Someshwar Shikshan Prasarak Mandal's

## Sharadchandra Pawar College of Engineering & Technology

Someshwarnagar, Tal. Baramati, Dist. Pune (Pin : 412 306 ) Maharashtra, India  
Approved by AICTE New Delhi, Recognised by Govt. of Maharashtra &  
Affiliated to Savitribai Phule Pune University, Pune, Id. No. PU/PN. Engg./445/2012  
Ph : (02112) 253185, Fax : (02112) 283185

Ref. No. : SPCE/ / 2020 - 2021

Date : 19/06/2021

### The institute has specific strategic plans which include:

- Strengthening the student development and campus facilities,
- Enhance the industry institute collaborations.
- Standardizing the ICT based teaching-learning processes.
- Improve internal support system.
- Strengthening alumni.

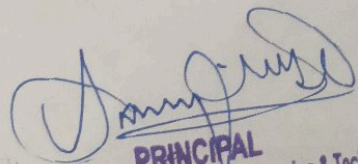
All the above strategic plans are monitored by the IQAC that meets often and decide on academic quality control issues. Apart from the above, the Institution's strategic plans critically examine the grooming of the students for rewarding with excellent future by meeting various challenges. The major thrust of the strategic plan is to achieve standardized improvement in the quality of technical education, as the Institution imparts in line with the Vision and Mission of the institution. It also aims to meet the expectations from all the stakeholders viz. Students, teachers, parents and employers to achieve improved levels of satisfaction.

### Perspective Plan for development:

The Institution certainly has plans for its all round development and accordingly several perspective plans are designed viz. Improvement, up-gradation and refinement of the existing set up which is an unending process and the Institution will never lag behind this progression. The Institution has spacious campus which offers great potential for the development of further Infra-structure. The institution is planning to build a hostel building on the campus shortly for boys. Many such ambitious projects can be taken up for implementation in the days to come.

- To establish better academic practices and procedures.
- To be a choice for good quality students and competent faculty.
- To produce technically competent and ethically strong graduates.
- To encourage Research & consultancy.
- To develop a smart campus.
- To offering value added certificate programs.
- To organizing National/International Conferences.



  
**PRINCIPAL**  
Sharadchandra Pawar College of Engineering & Technology  
Someshwarnagar, Tal. Baramati, Dist. Pune (Pin : 412 306)





॥ Tamaso ma Jyotirgamaya ॥  
Shri Someshwar Shikshan Prasarak Mandal's

# Sharadchandra Pawar College of Engineering & Technology

Someshwar Nagar, Tal. Baramati, Dist. Pune (Pin : 412 306 ) Maharashtra, India

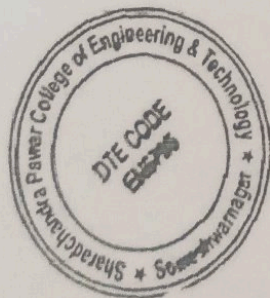
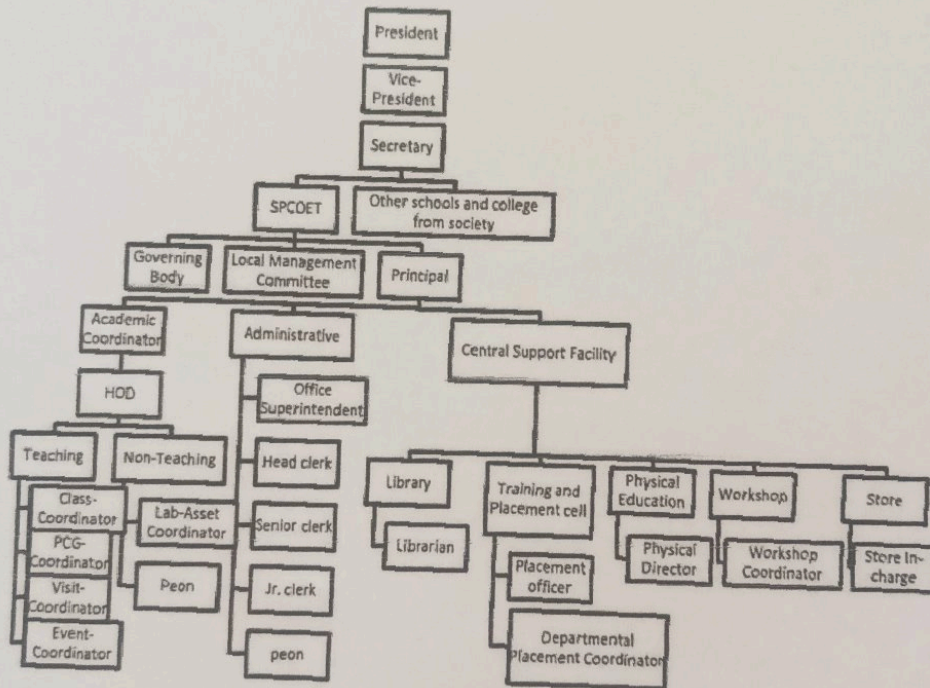
Approved by AICTE New Delhi, Recognised by Govt. of Maharashtra &

Affiliated to Savitribai Phule Pune University, Pune, Id. No. PU/PN. Engg./445/2012

Ph : (02112) 253185, Fax : (02112) 283185

Ref. No. : SPCE/ / 2020 - 2021

Date : 19/06/2020



*[Signature]*  
PRINCIPAL

Sharadchandra Pawar College of Engineering & Technology  
Someshwar Nagar, Tal. Baramati, Dist. Pune (Pin : 412 306)



॥ Tamaso ma Jyotirgamaya ॥  
Shri Someshwar Shikshan Prasarak Mandal's

## Sharadchandra Pawar College of Engineering & Technology

Someshwarnagar, Tal. Baramati, Dist. Pune (Pin : 412 306 ) Maharashtra, India  
Approved by AICTE New Delhi, Recognised by Govt. of Maharashtra &  
Affiliated to Savitribai Phule Pune University, Pune, Id. No. PU/PN. Engg./445/2012  
Ph : (02112) 253185, Fax : (02112) 283185

Ref. No. : SPCE/ (SCM) 12023 - 2024

Date : 14/08/2023

### LOCAL MANAGEMENT COMMITTEE

Sr. No.	Name of Faculty	Designation	Nomination
1	Shri. Purushottam R. Jagtap	President – Shri. Someshwar Sugar Factory.	Chairman
2	Mrs. Pranita Khomane	Vice President – Shri. Someshwar Sugar Factory.	Member
3	Shri. Bharat T. Khomane	Secretary- Someshwar Shikshan Prasarak Mandal.	Member
4	Shri. Rajwardhan Shinde	Director – Shri. Someshwar Sugar Factory.	Member
5	Shri. Shivajirao Raje Nimbalkar	Director – Shri. Someshwar Sugar Factory.	Member
6	Dr. Sanjay A. Deokar	Principal, SPCOE&T	Member

**Term of the members:** As per SSPM norms for Management members, two years for Educationalist / Industrialist, Teaching and non-teaching nominee. Whenever a vacancy arises, the Chairperson of the BOG can appoint a new member.

**Frequency of Meeting:** The member secretary shall, with the approval of the Chairman convene the meeting of the BOG at least twice a year and such other occasions as may be necessary. The member secretary shall, with the approval of the Chairman prepare the agenda for the meeting.



Dr. S.A. Deokar

PRINCIPAL  
SHARADCHANDRA PAWAR COLLEGE OF ENGINEERING & TECHNOLOGY  
SOMESHWARNAGAR, TAL. BARAMATI, DIST. PUNE (PIN-412 306)





॥ Tamaso ma Jyotirgamaya ॥  
Shri Someshwar Shikshan Prasarak Mandal's

## Sharadchandra Pawar College of Engineering & Technology

Someshwarnagar, Tal. Baramati, Dist. Pune (Pin : 412 306 ) Maharashtra, India

Approved by AICTE New Delhi, Recognised by Govt. of Maharashtra &  
Affiliated to Savitribai Phule Pune University, Pune, Id. No. PU/PN. Engg./445/2012

Ph : (02112) 253185, Fax : (02112) 283185

Ref. No. : SPCE/18(A) /2023 - 2024

Date : 14/08/2023

### GOVERNING BODY

The board of governance of college is as follows.

Sr. No.	Name of Faculty	Designation	Nomination
1	Shri. Purushottam R. Jagtap	President -Shri. Someshwar Sugar Factory.	Chairman
2	Mrs. Pranita Khomane	Vice President - Shri. Someshwar Sugar Factory.	Member
3	Shri. Bharat T. Khomane	Secretary- Someshwar Shikshan Prasarak Mandal.	Member
4	AICTE Nominee	Regional Officer and Director-WRO AICTE, Mumbai.	Member Nominee- AICTE
5	DTE Nominee	Joint Director -DTE, RO- Pune.	Member Nominee DTE
6	Dr. Sanjay A. Deokar	Principal, SPCOE&T	Member Secretary

**Term of the members:** As per SSPM norms for Management members, two years for Educationalist/ Industrialist, Teachers nominee, AICTE, University, Government nominee's term will be as per their letter and for the UGC nominee, term will be a full six years. Whenever a vacancy arises, the Chairperson of the BOG can appoint a new member.

**Frequency of Meeting:** The member secretary shall, with the approval of the Chairman convene the meeting of the BOG at least twice a year and such other occasions as may be necessary. The member secretary shall, with the approval of the Chairman prepare the agenda for the meeting.



Dr. S.A. Deokar

PRINCIPAL

SHARADCHANDRA PAWAR COLLEGE OF ENGINEERING & TECHNOLOGY  
SOMESHWARNAGAR, TAL. BARAMATI, DIST. PUNE (Pin-412 306)



॥ Tamaso ma Jyotirgamaya ॥  
Shri Someshwar Shikshan Prasarak Mandal's

## Sharadchandra Pawar College of Engineering & Technology

Someshwarnagar, Tal.Baramati, Dist. Pune (Pin : 412 306 ) Maharashtra, India  
Approved by AICTE New Delhi, Recognised by Govt. of Maharashtra &  
Affiliated to Savitribai Phule Pune University, Pune, Id. No. PU/PN. Engg./445/2012  
Ph : (02112) 253185, Fax : (02112) 283185

Ref. No. : SPCE/ 18(A) /2023 - 2024

Date : 14/02/2023

### CIRCULAR Internal Quality Assurance Cell (IQAC)

Sr. No.	Name	Department	IQAC Designation	Mobile No.
1	Dr. S. A. Deokar	Principal	Chairperson	9823141287
2	Hon'ble Shri A. S. Holkar	Trustee	Management Representative	02112282150
3	Hon'ble Shri. B. T. Khomane	Secretary	Member (Administrative Officer)	9552171171
4	Dr. S. R. Gawade	HOD – Mechanical	IQAC Coordinator	9423221655
5	Prof. S. M. Patil	HOD – Civil	Member (Teacher)	9323583519
6	Prof. S. N. Shah	HOD - Computer	Member (Teacher)	8888781968
7	Prof. G.G. Gadhave	HOD – Electrical	Member (Teacher)	9665707922
8	Prof. N. S. Wable	HOD – Science and Humanity	Member (Teacher)	9762679500
9	Dr. Gaikwad A.N.		Member (Educationalist)	7620137623
10	Hon'ble Shri R. Yadav	MD, SSSK Ltd.	Member (Industrialist)	02112282150
11	Mr. DhumaYuvraj	Student Member	Member (Alumni/ Industrialist)	8600404804

**The primary goals of the IQAC:**

- To develop a system for conscious, consistent and catalytic action to improve the academic and administrative performance of the institution.
- To promote the measures for institutional functioning towards quality enhancement through internalization of quality culture and institutionalization of best practices.

**IQAC will facilitate/contribute:**

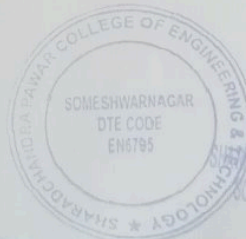
- To ensure enhancement and coordination among various activities of the institution and institutionalize all good practice.
- To focus in institutional functioning towards quality enhancement and to ensure internalization of quality culture.

**Functions of IQAC:**

- Development and application of quality benchmarks / parameters for various academic and administrative activities of the institution.
- Creation of learner-centric environment for quality education and faculty maturation in teaching learning process.
- Organization of inter and intra institutional workshops, seminars, conferences and guest lectures on quality related themes and promotion of quality circles.

**Note:**

- The IQAC should meet at least once in every quarter (Four meetings / year).



Dr.S.A.Deokar  
PRINCIPAL  
SHARADCHANDRA PAWAR COLLEGE OF ENGINEERING & TECHNOLOGY  
SOMESHWARNAGAR, TAL-BARAMATI, DIST-PUNE (Pin-412 306)